

DN2-CLN-20 Barn Owl



DN2-CLN-21 Compass Pointe



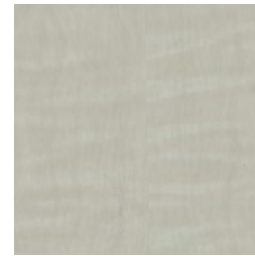
DN2-CLN-22 Almondine



DN2-CLN-23 Satin Slipper



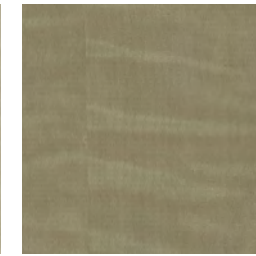
DN2-CLN-24 Paperwhite



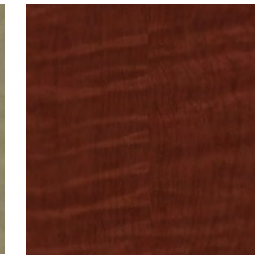
DN2-CLN-25 Blonde Wood



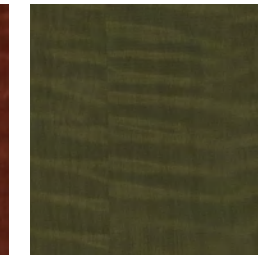
DN2-CLN-26 Turbinado



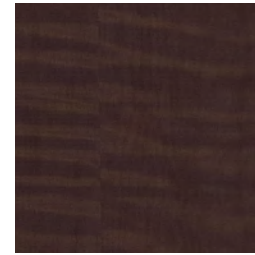
DN2-CLN-27 Bamboo Reed



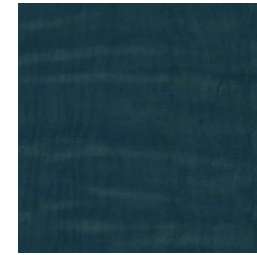
DN2-CLN-28 Sapling



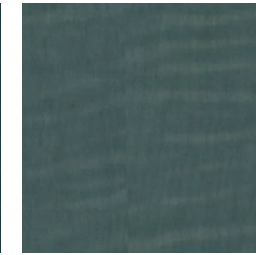
DN2-CLN-29 Greek Olive



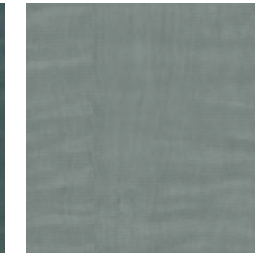
DN2-CLN-30 Winewashed



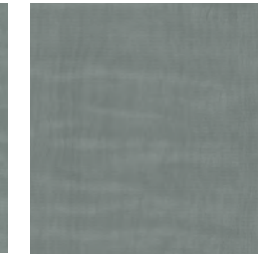
DN2-CLN-31 Galapagos



DN2-CLN-32 Northwoods



DN2-CLN-33 Freshwater



DN2-CLN-34 Aloft



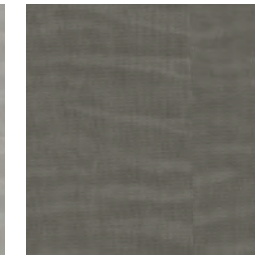
DN2-CLN-35 Pacific Silver



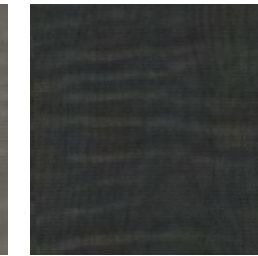
DN2-CLN-36 Himalayan White



DN2-CLN-37 Smoked Salt



DN2-CLN-38 Reclaimed Wood



DN2-CLN-39 Fade to Black



FOR SIMILAR TEXTURES
CLICK HERE

Type II 20 oz | Width: 52"/54" | Backing: Osnaburg | Match: Random Match Reversible Pattern
Repeat 26"H x 24"V | Fire Rating: Class A | Flame Spread: 15 | Smoke Development: 10

[CLICK COLOURS](#)

[CLICK SAMPLES](#)

[CLICK SPECS](#)

[CONTACT US](#)



A Colour & Design Inc. Company.
Copyright 2016. All Rights Reserved.
Any copying or other use is expressly prohibited.
Made in the U.S.A.